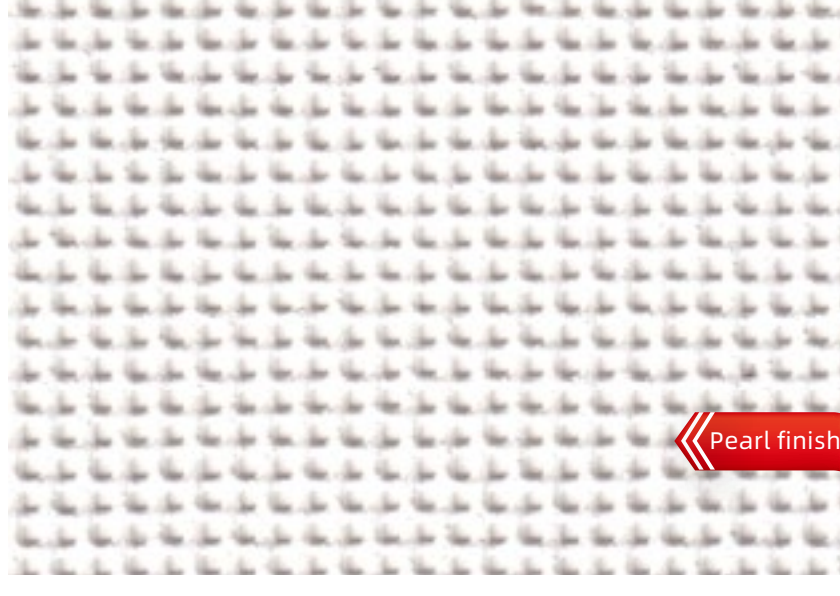
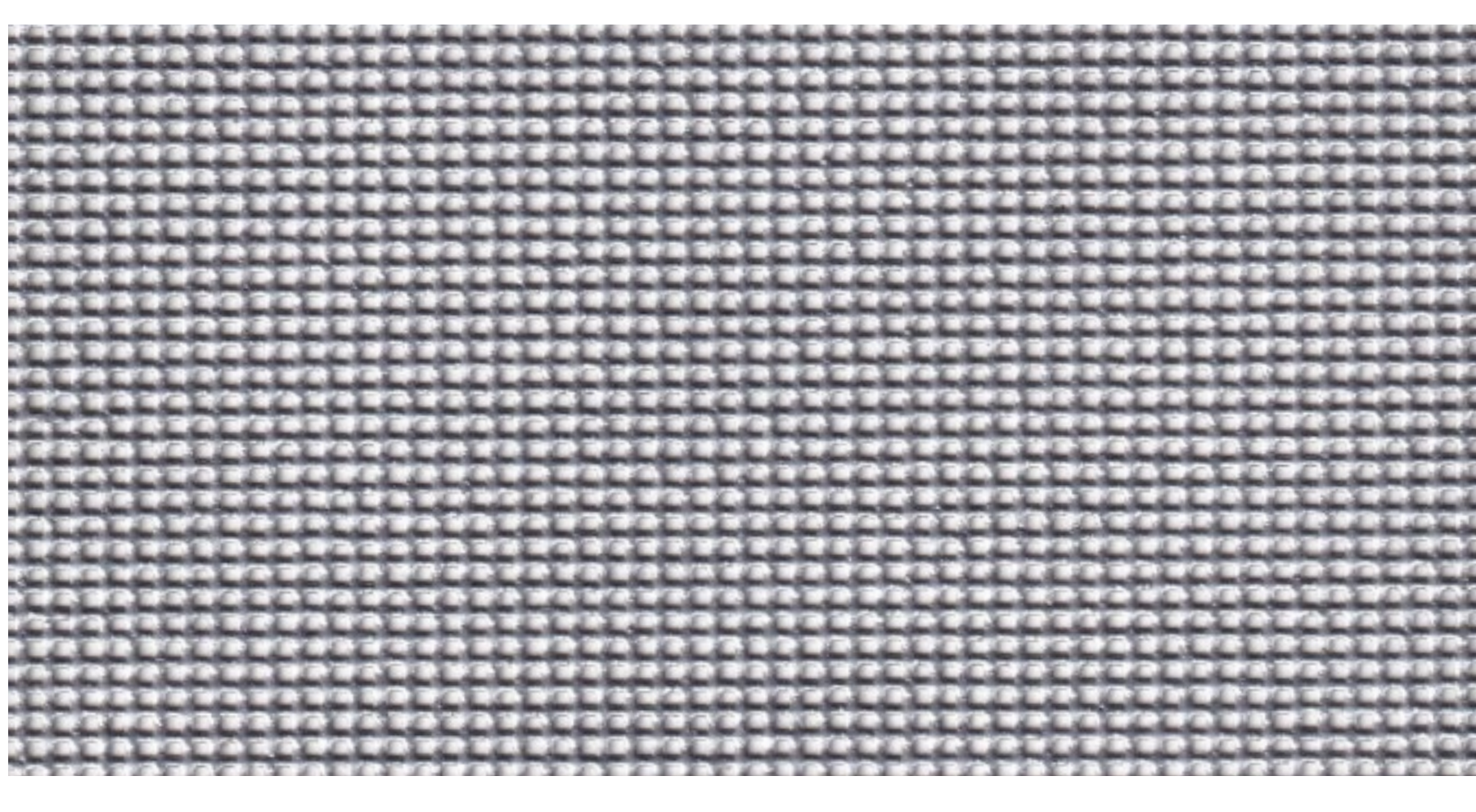


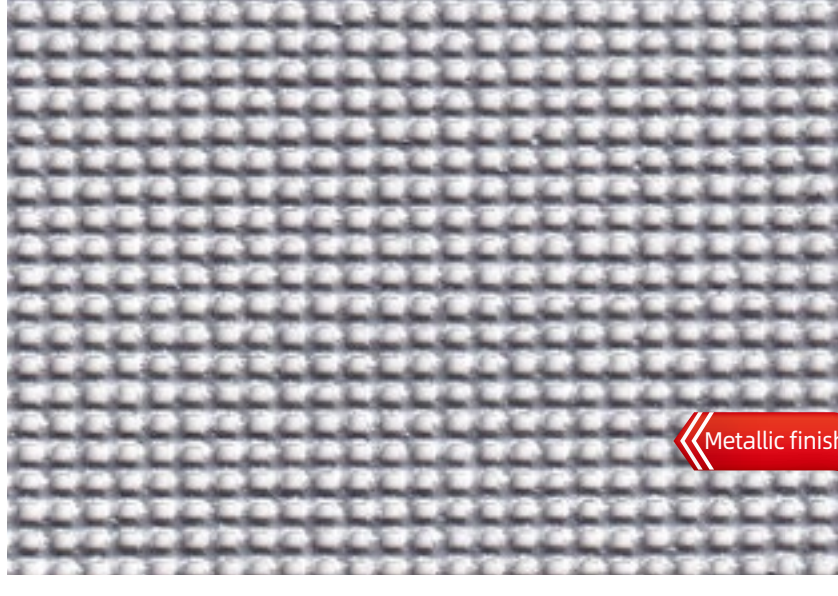
YUMA TESLA

More Lighter, More Stronger and All-weather
Sunshading fabric

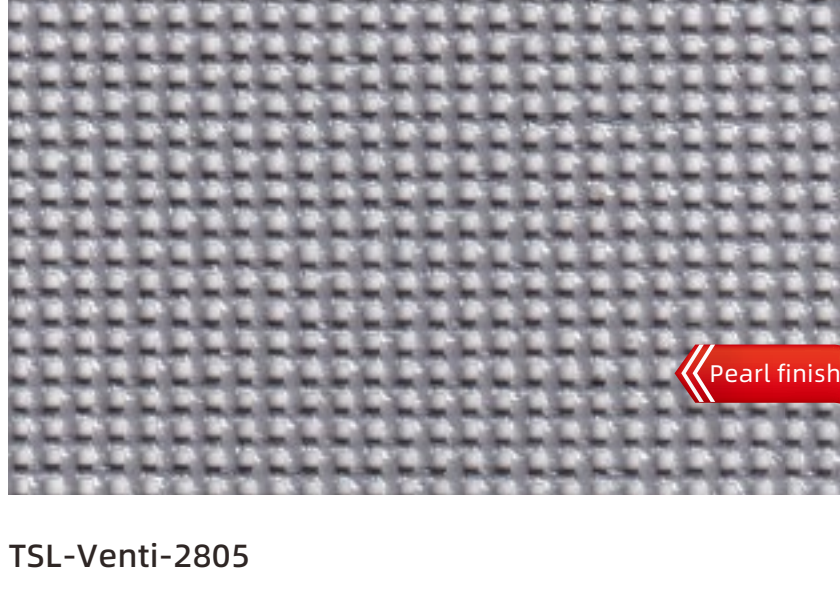
TSL-Venti



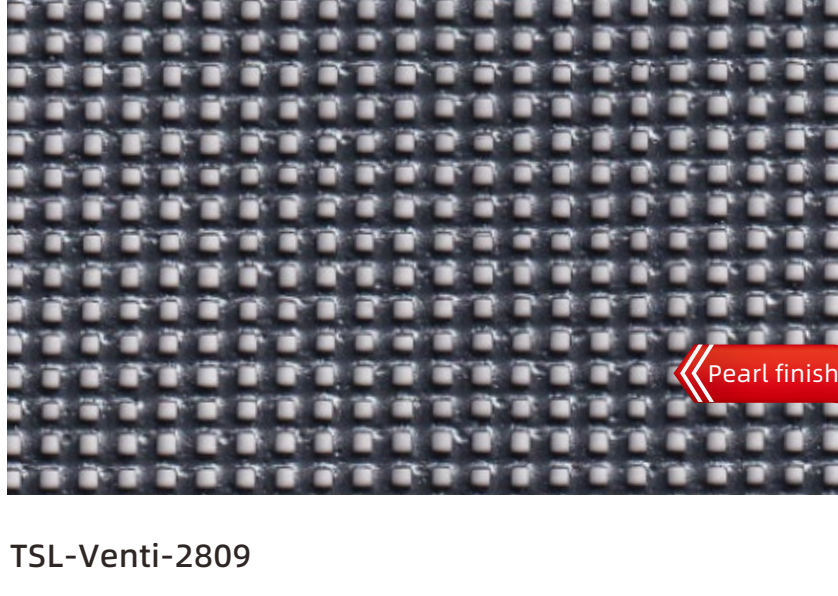
TSL-Venti-2801



TSL-Venti-2804



TSL-Venti-2805



TSL-Venti-2809

Rich architectural creativity.

Flexible tension, a variety of shapes. The metal and pearl coating on the surface of membrane forms a unique texture in the sun, and the membrane surface can be printed with rich patterns.



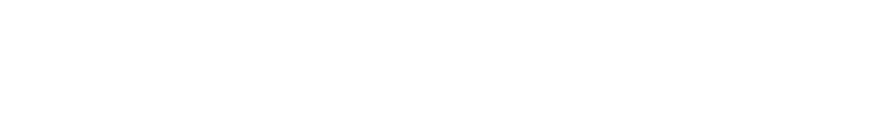
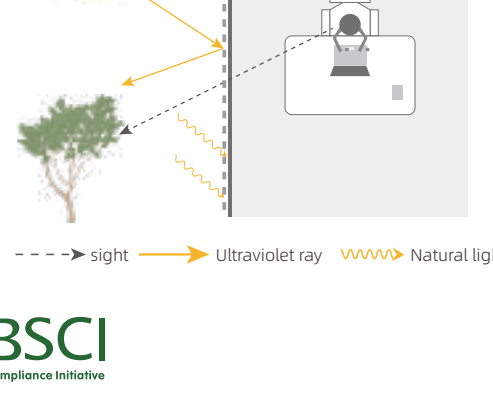
Sun shading and heat insulation, building energy savin.

Up to 78% of the solar thermal radiation; greatly reduce energy consumption of air conditioning in summer.



Sight is transparent, dazzling light adjustmen.

Sun shading and heat insulation do not affect natural lighting. The line of sight is transparent and effectively blocks the dazzling light.



Technical properties		
Product	TSL-Venti	-
Width	250/300cm	DIN EN ISO 2286-1
Thickness	1.10mm	DIN EN ISO 2286-3
Total Weight	620g/m²	DIN EN ISO 2286-2
Physical properties		
Tensile strength	Warp 3200N/5CM Weft 3800N/5CM	EN ISO 1421
Tear strength	Warp 800N/5CM Weft 900N/5CM	DIN 53363
Adhesion	≥100N/5CM	EN ISO 2411
Crack resistance	-	DIN 53359-A
Elongation	1% / 1%	EN 15977 (24h-100N/5cm)
Residual elongation	0.4% / 0.4%	EN 15977 (24h-100N/5cm)
Anti-wicking	-	FZ/T64014-2009
Extreme working temperatures	-30~70°C	DIN EN 1876-1
Flame retardancy		
Flame retardancy	BI	DIN 4102
	Pass	NFPA 701
	M1	NFP 92-507
Surface treatment		
Surface treatment	Front face metallic or pearl finish/back face matt finish	-
Self-cleaning performance	-	GB/T 9780-2013
Solar optical values		
Color fastness	≥7	ISO 105-B04
UV Aging Test	≥4	ISO 4892-3 grey scale assess
Eco friendly		
Environmental Friendly	Pass	REACH
Anti-mildew Test	Pass	ASTM G21-15
Heavy Metal Test (Cd/Pb/Hg)	Pass	GB/T 26125
Odor Test	Pass	GB 18401
PH Value Test	Pass	GB 18401
Formaldehyde content test	Pass	GB 18401
Certifications, labels, guarantees		
China Environmental Labelling	Pass	-
ISO 9001	Pass	DIN EN
ISO 14001	Pass	DIN EN
ISO 45001	Pass	DIN EN

The technical data above are averaged values with a +/-5% tolerance. Values quoted in this document are commonly used test results for design purposes. They are given for information only in order to offer our customers optimum usage of our products. Our products are subject to improvements resulting from technical developments and we reserve the right to modify their characteristics at any time. The purchaser of our products is responsible for checking the above data. The colours and textures presented are included for information only.

Constant tension

Measured by two tension detectors - the actual tension is compared with the artificially required tension, the tension controller will set the corresponding reduction or increase of the output proportion of the tension, so that the actual tension and the required tension maintain a dynamic balance to achieve constant tension. To achieve the fabric is flat state when it is sold from the factory.

Prestress

In the process of coating, two-way tension is always applied to the warp and weftward of the material, so the fabric does not have any deformation, drop, fold, depression even under the force, and has the characteristics of maintaining permanent stability of the size, especially suitable for the use of large size. Even in the later period under the condition of violent heat, the fiber always maintains a tensioned state and does not deform.

Super dimensional stability: unique Strain Balance® constant tension + prestress proprietary balance technology.

Standards: GB/T 2680-2021		Solar Optical Values				
COLOR CODING		Thermal factors			Optical factors	
		RS	TS	AS	TV	RV
TSL-Venti-2801		59	36	5	35	65
TSL-Venti-2804		35	32	33	32	35
TSL-Venti-2805		21	30	49	30	24
TSL-Venti-2809		9	27	64	27	11

Ts: Solar energy Transmission
The proportion of solar energy transmitted through the fabric. A low percentage means that the fabric performs well in reducing solar energy.

Rs: Solar Reflectivity
The proportion of solar radiation reflected by the fabric. A high percentage means that the fabric performs well in reflecting solar energy.

As: Solar Absorptance
The rate at which the fabric absorbs the sun. Solar radiation is always partially passed through, absorbed or reflected by the fabric, and the sum of the three equals 100.

Ts + Rs + As = 100% Solar radiation energy.

Dimensional stability

Easy to clean

UV resistant